

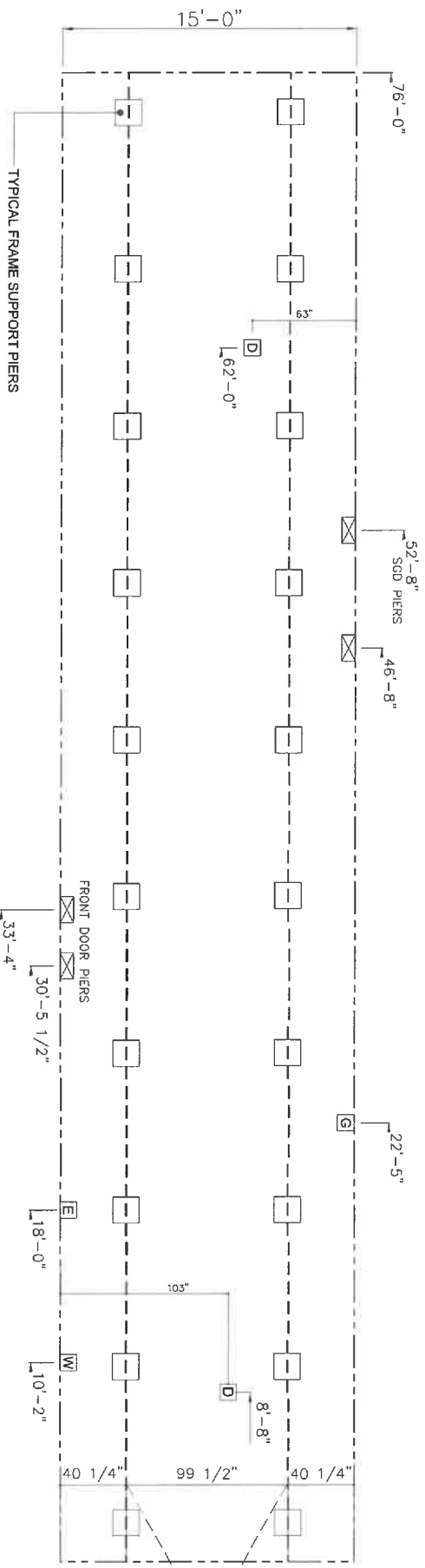
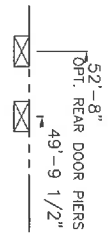


Model#: TRS167635

16' X 76' Spectacular

SIDEWALL OPENING PIER LOAD 16' BOX WIDTH	SIDEWALL OPENING (FT) REQUIRED PIER LOAD (LBS)									
	3	4	5	6	8	10				
	1244	1413	1581	1750	2088	2425				

*FOR 30 lb & 40 lb ROOF LOAD REFER TO TABLES 7 & 7a IN THE INSTALLATION MANUAL.



SERVICE DROP LEGEND

- E** = ELECTRICAL DROP
- W** = WATER INLET
- D** = DWV PLUMBING DROP
- G** = GAS INLET

PIER LEGEND

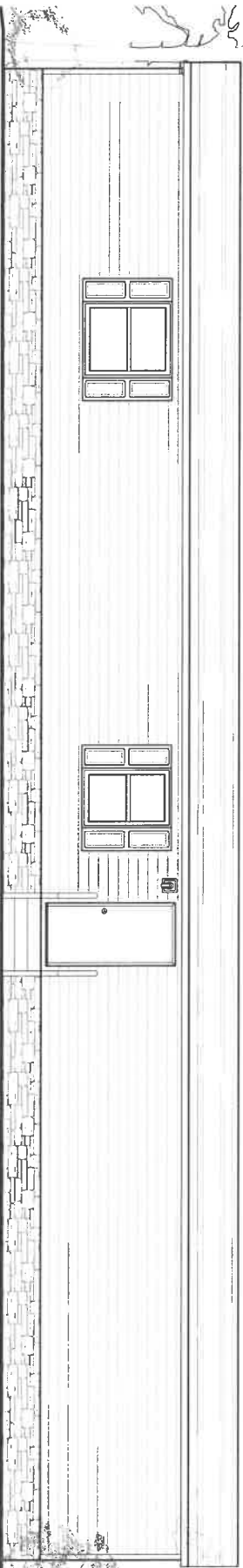
- = PIER MAIN BEAM
- = PIER PERIMETER
- = PIER PORCH/ACCESSORY ENTRY

- NOTES:**
- REFER TO TABLES 6 AND 6a IN THE INSTALLATION MANUAL FOR LOAD ON FRAME PIER FOOTINGS FOR HOMES THAT DO NOT REQUIRE PERIMETER BLOCKING. REFER TO TABLES 7 AND 7a IN THE INSTALLATION MANUAL FOR LOAD ON FRAME PIER FOOTINGS FOR HOMES THAT REQUIRE PERIMETER BLOCKING. REFER TO TABLES 10 AND 10a TO DETERMINE FOOTING SIZE FOR ALL PIERS. REFER TO TABLE 9 FOR PIER CONFIGURATION AND MAXIMUM ALLOWABLE HEIGHTS. CROSS REFERENCE THE PIER HEIGHT WITH THE MAXIMUM ALLOWABLE FLOOR HEIGHT LISTED IN THE FRAME TIEDOWN CHARTS (TABLE 18, 19, AND 20).
 - THE MAXIMUM SPACING FOR FRAME SUPPORT PIERS FOR 8" I-BEAMS IS 8 FEET, 10" I-BEAMS IS 10 FEET, APPROXIMATE.
 - FLOOR WIDTH SHOWS IS FOR STANDARD PRODUCT ONLY. CONTACT THE MFG FACILITY FOR SPECIFICATIONS OF OPTIONS ORDERED.

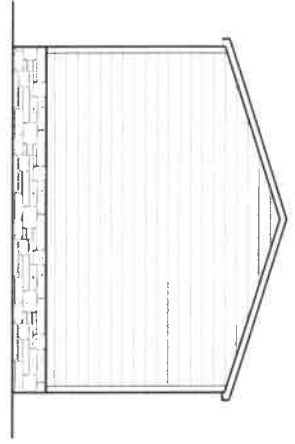
MODEL NAME Spectacular	MODEL NO. TRS16763S	MODEL SQ. FT. 1,140
BOX SIZE 16' x 76'	DATE DRAWN JEREMY HULTING	DATE PRINTED 9/2/2021
DATE DRAWN 2/19/19	SCALE 3/16"=1'	SHEET NAME PIER LAYOUT
PLAN NO. TRU-S010-76-3	SHEET NO. SU-1.	



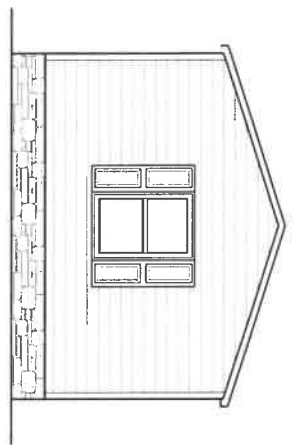
FRONT ELEVATION



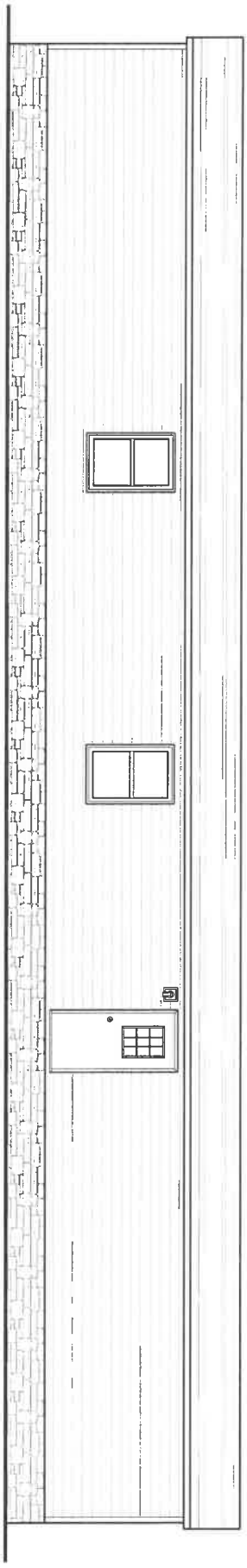
RIGHT ELEVATION



LEFT ELEVATION



REAR ELEVATION



SHEET NO. EX-1.	SHEET TITLE Exterior Elevation	PROJECT NO. TRU-S010-76-3	SCALE 3/16"=1'	DATE PRINTED 9/2/2021	DATE DRAWN 2/19/19	DRAWN BY JEREMY HULTING	MODEL NAME	REVISION	DATE
							Spectacular		
							MODEL NO. TRS16763S		
							BOX SIZE 16' x 76'	MODEL SQ. FT. 1,140	

